

1 **Supplementary Figures.**

2 **Figure S1.** Genotyping using marker KT7: by separation of PCR products by capillary
3 electrophoresis.

4 **Figures S2.** Exome capture data for Chr 1B, line A1 with data for 4 genes close to the
5 deletion borders.

6 **Figures S3.** Exome capture data for Chr 4A, line A1 with data for 4 genes close to the
7 deletion borders.

8 **Figures S4.** Exome capture data for Chr 5D, line A1 with data for 4 genes close to the
9 deletion borders.

10 **Figures S5.** Exome capture data for Chr 6A, line A1 with data for 4 genes close to the
11 deletion borders.

12 **Figures S6.** Exome capture data for Chr 1A, line D4 with data for 4 genes close to the
13 deletion borders.

14 **Figures S7.** Exome capture data for Chr 1B, line D4 with data for 4 genes close to the
15 deletion borders.

16 **Figures S8.** Exome capture data for Chr 4B, line D4 with data for 4 genes close to the
17 deletion borders.

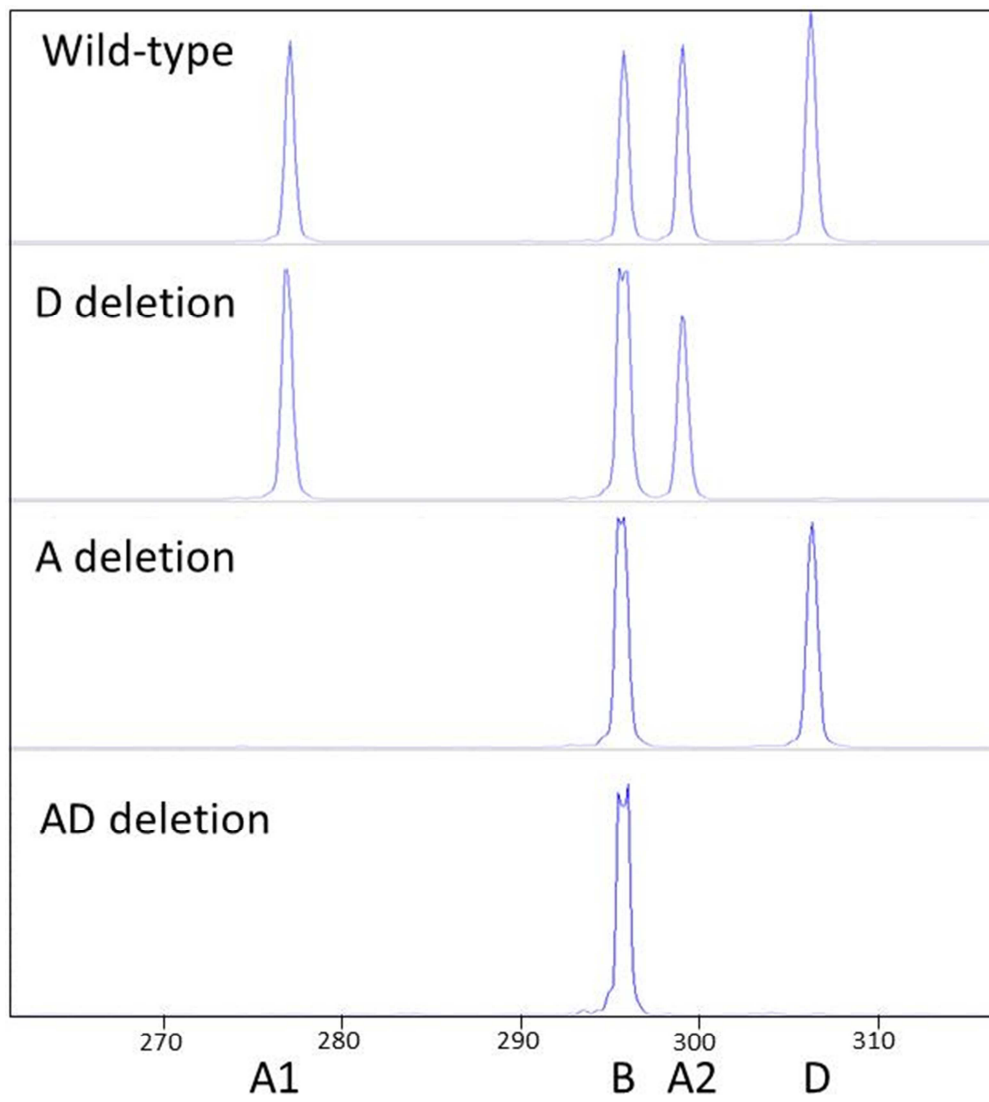
18 **Figures S9.** Exome capture data for Chr 4D, line D4 with data for 4 genes close to the
19 deletion borders.

20 **Figures S10.** Exome capture data for Chr 6D, line D4 with data for 4 genes close to the
21 deletion borders.

22 **Figures S11.** Exome capture data for Chr 7A, line D4 with data for 4 genes close to the
23 deletion borders.

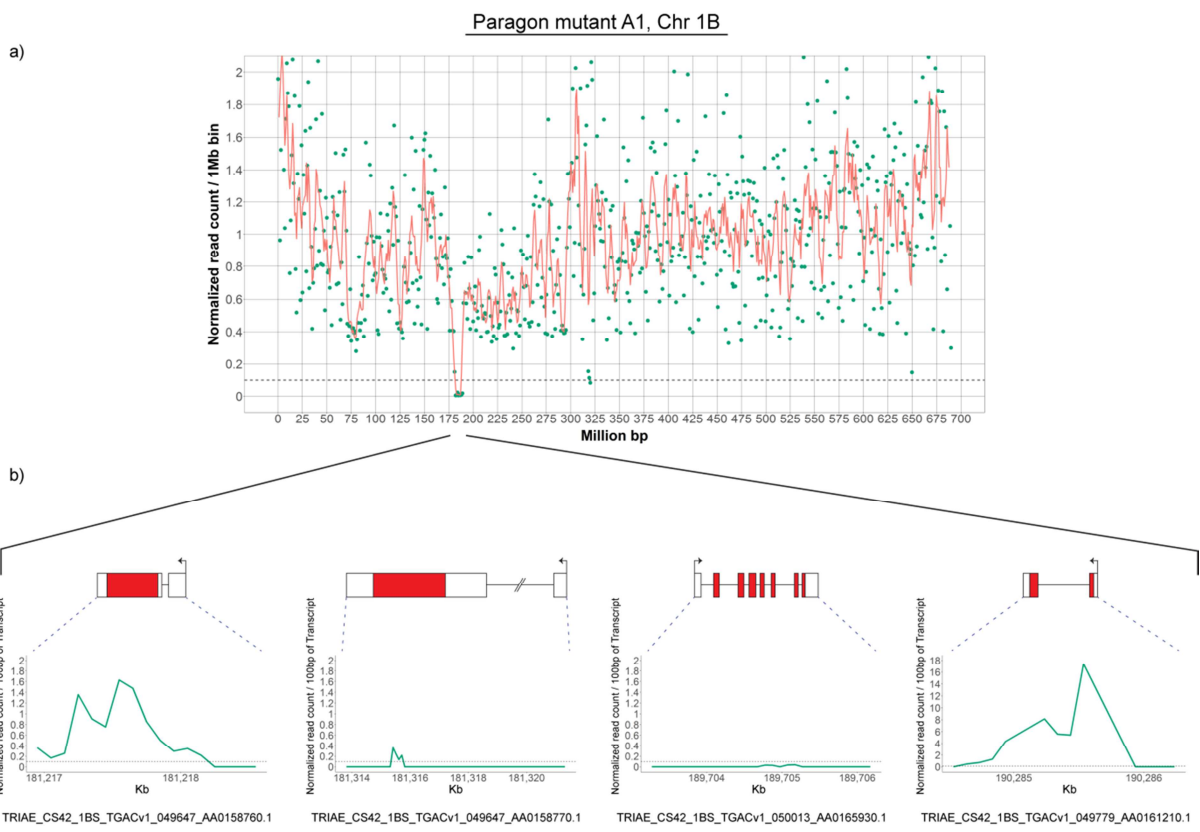
24

25 **Figure S1. Genotyping Marker KT71.**



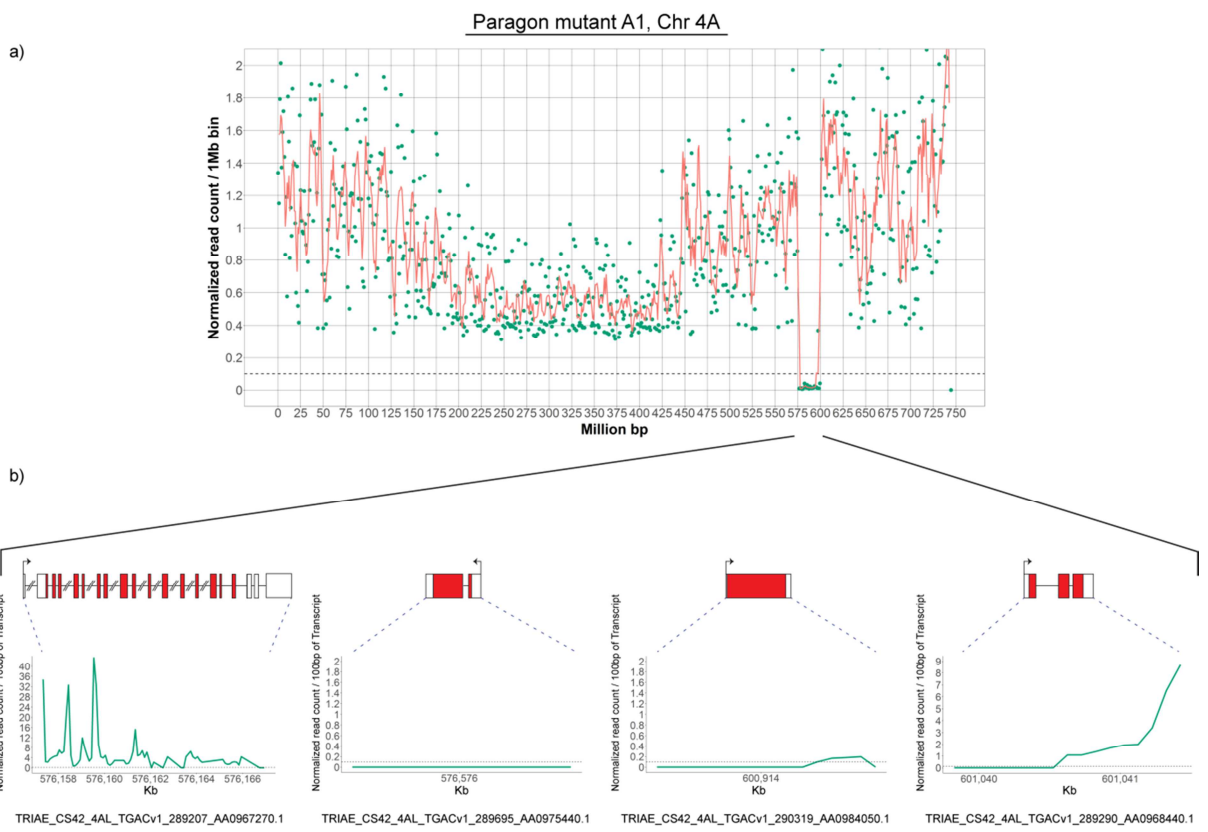
26
27

28 **Figure S2.**



29
30

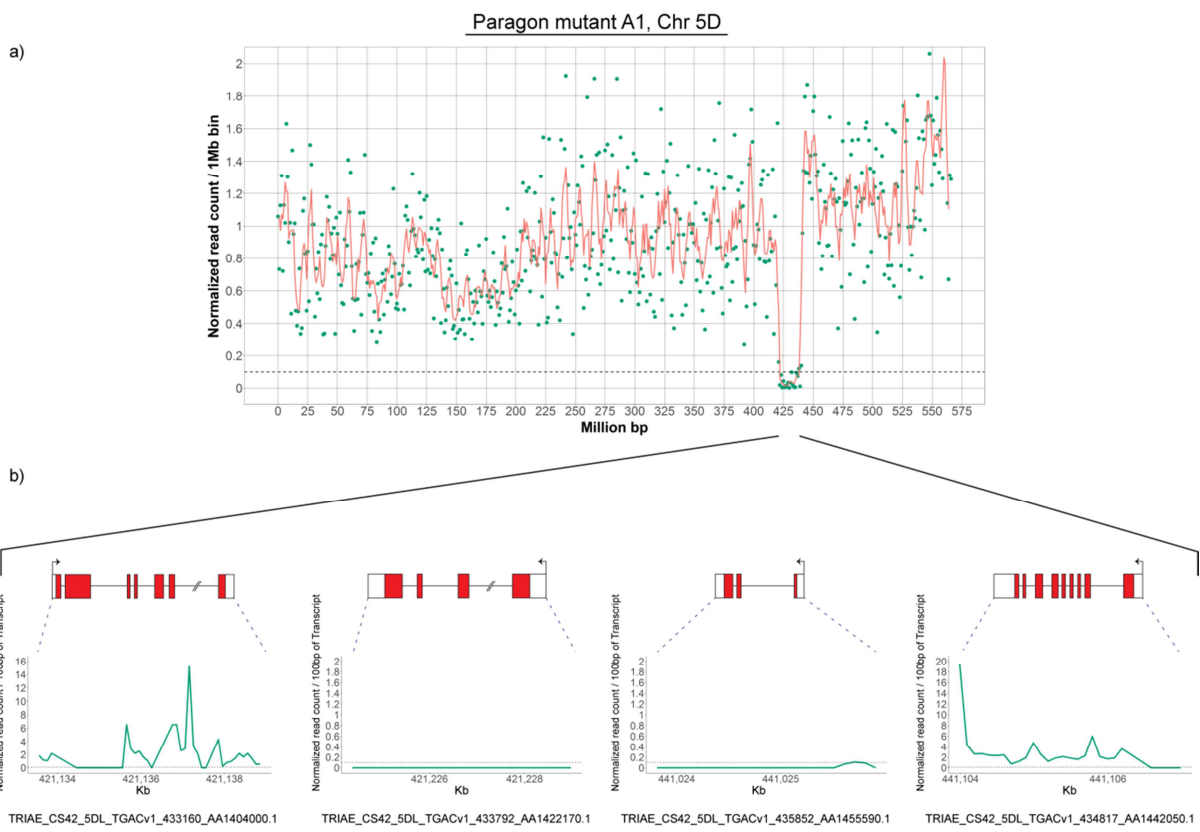
31 **Figure S3**



32

33

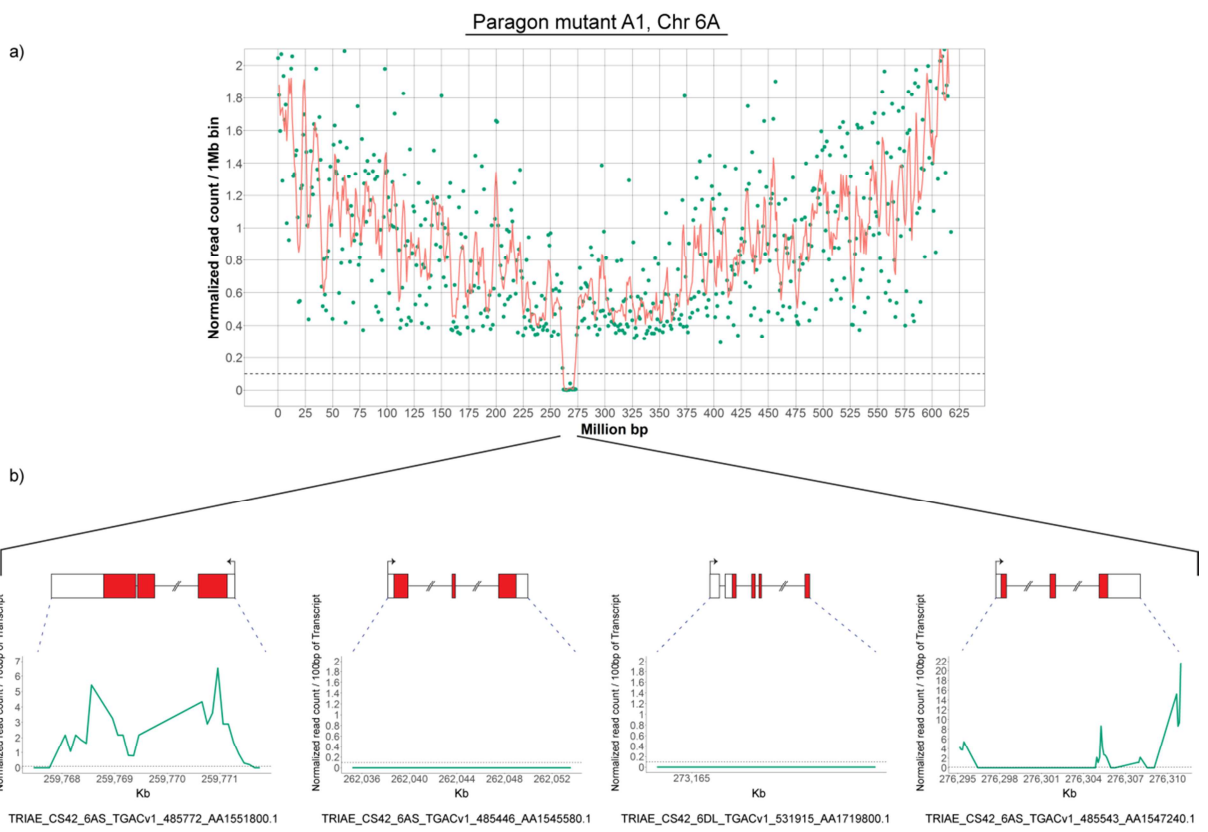
34 **Figure S4**



35

36

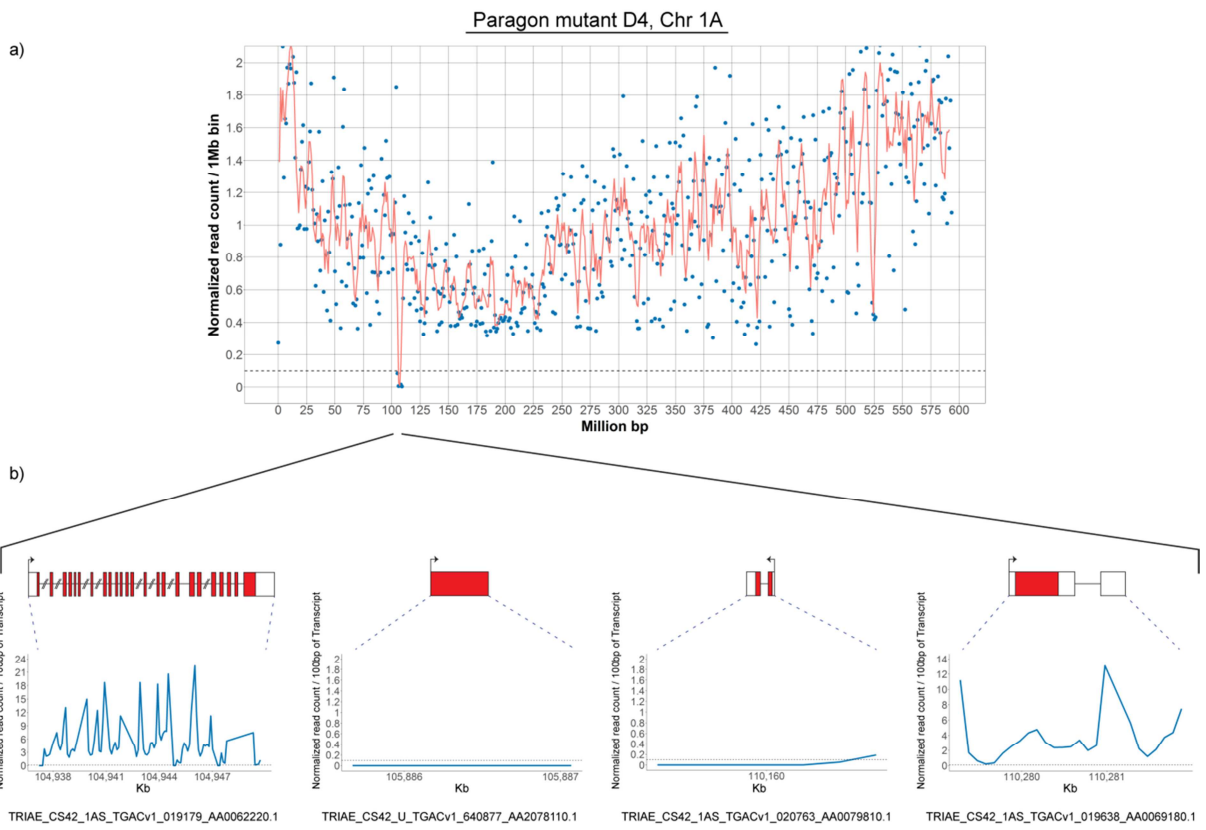
37 **Figure S5**



38

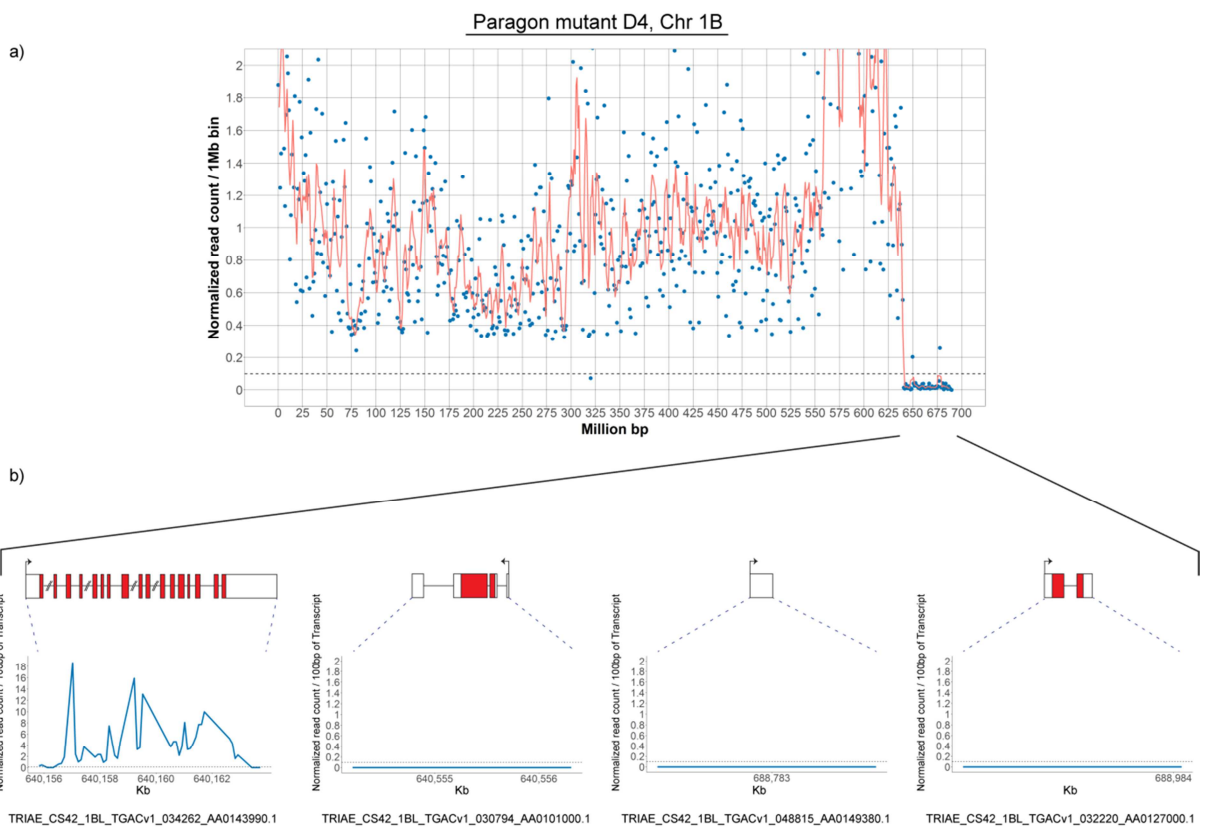
39

40 **Figure S6.**



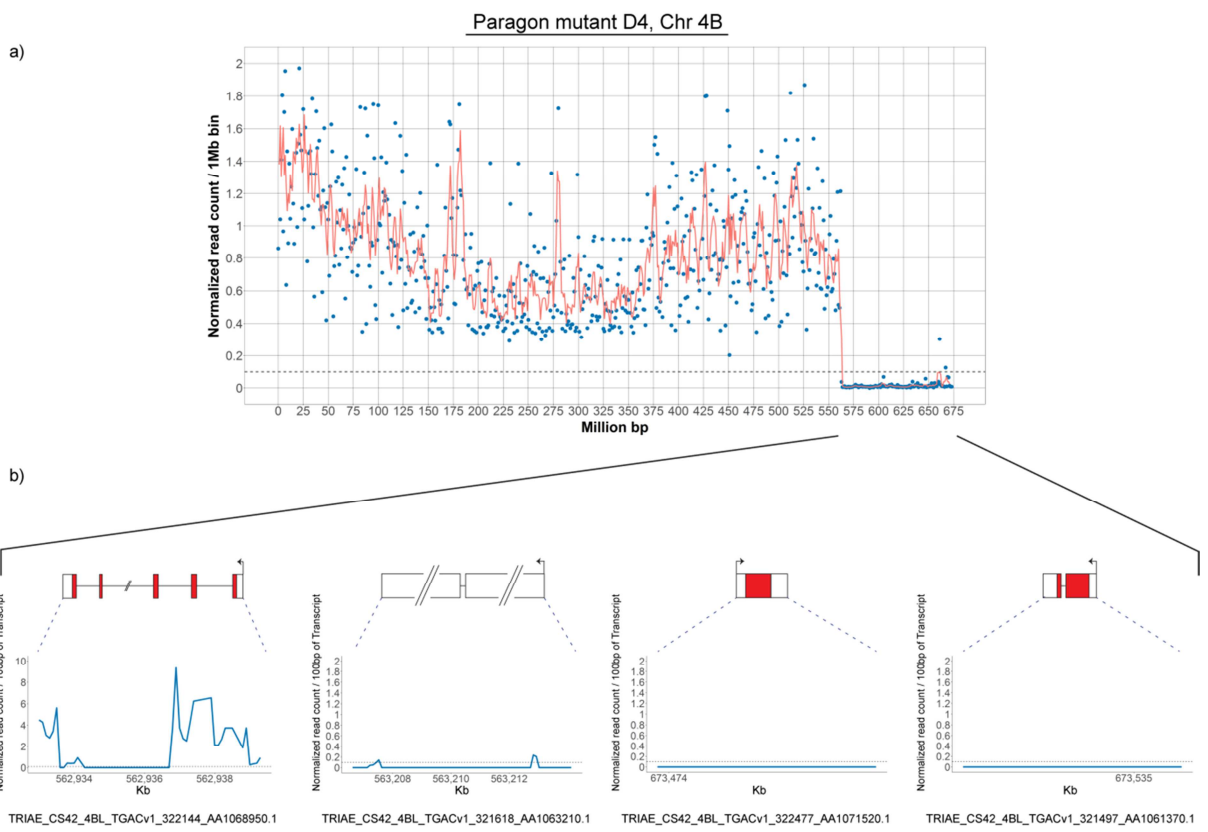
41
42

43 **Figure S7.**



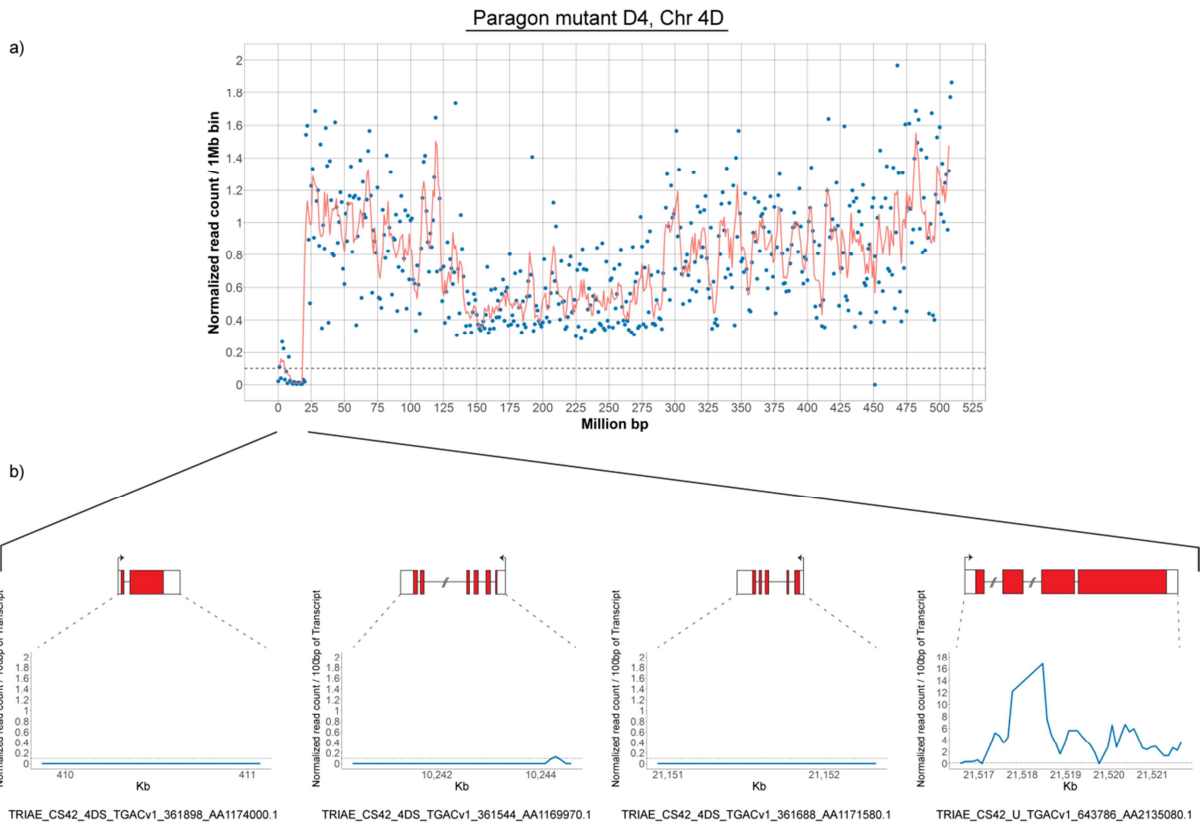
44
45

46 **Figure S8.**



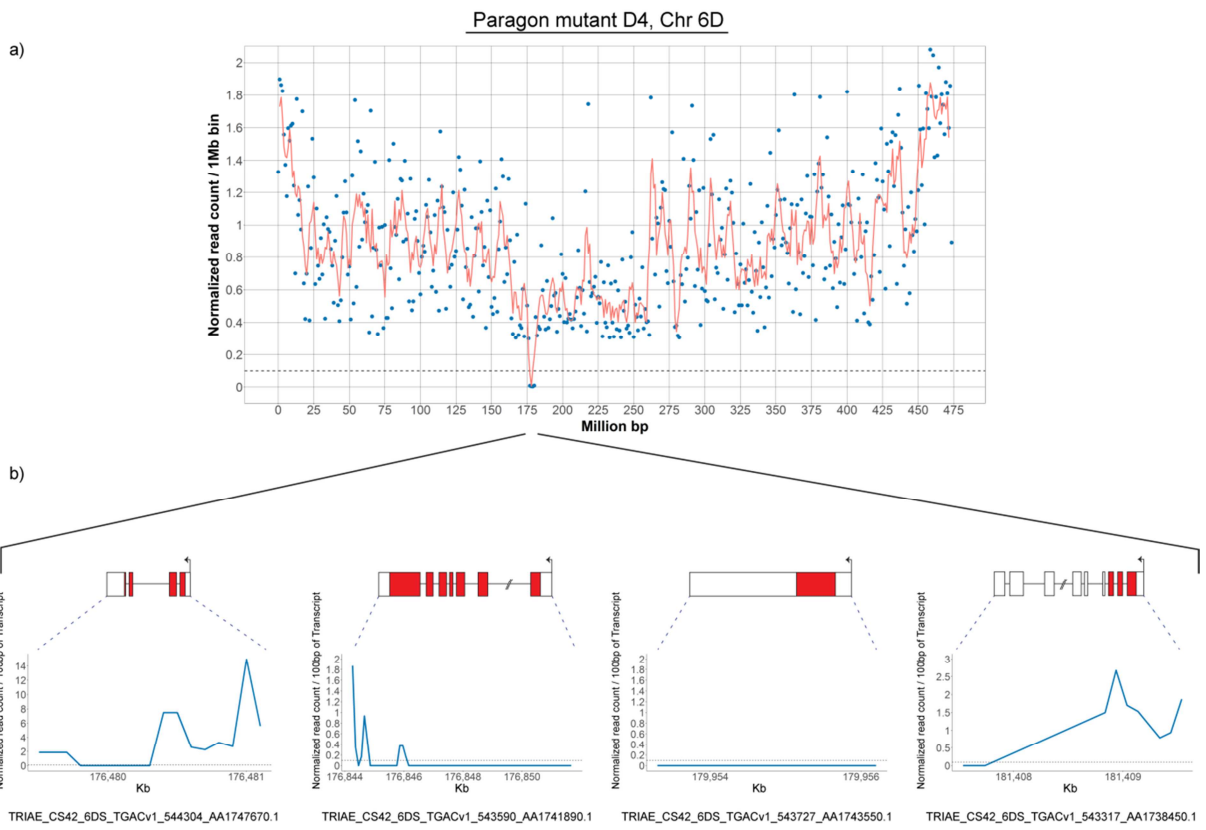
47
48

49 **Figure S9.**



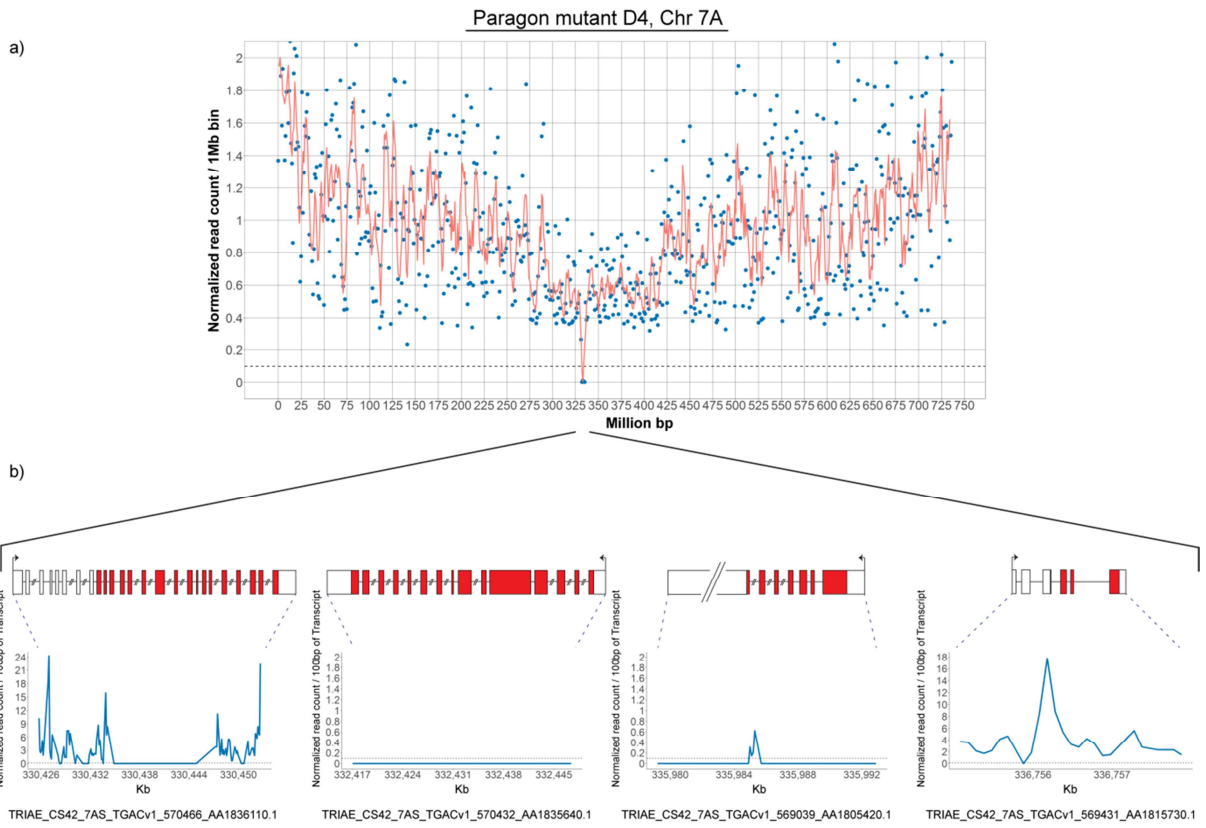
50
51

52 **Figure S10.**



53
54

55 **Figure S11.**



56